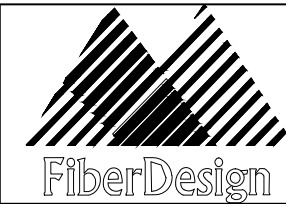


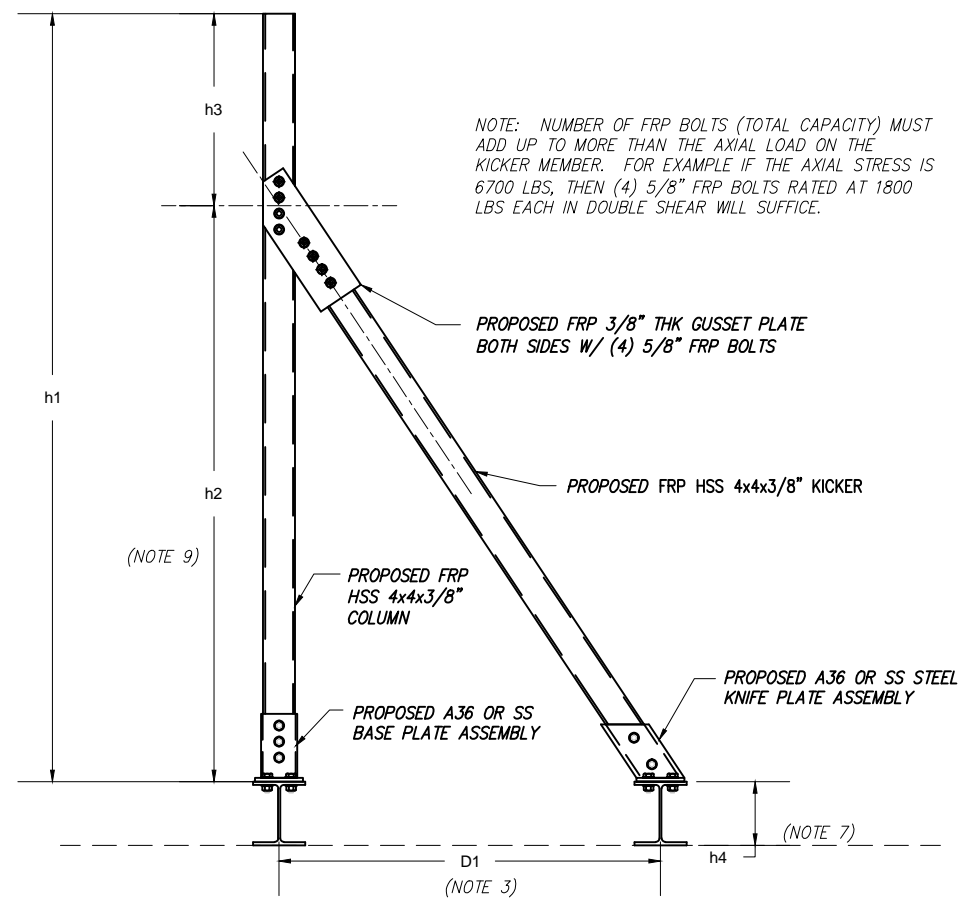
THIS DRAWING IS THE EXCLUSIVE PROPERTY OF FIBERDESIGN LLC AND PROVIDED SOLELY FOR THE PURPOSE OF SPECIFYING AND DEPICTING FRP DESIGN DETAIL WITHIN ENGINEERING DRAWINGS AND PLANS. ANY OTHER USE OF THESE DRAWINGS ARE EXPRESSLY PROHIBITED. THIS ELECTRONIC FILE MAY NOT BE STORED OR DISTRIBUTED WITHOUT PERMISSION OF FIBERDESIGN LLC, STANDISH, ME.

FRP KICKER DETAILS

SHEET
L1



www.fibrdesign.com
info@fibrdesign.com



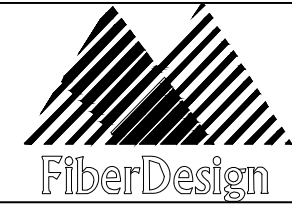
FRP KICKER (BRACE) DESIGN NOTES:

1. SEE BASE CONNECTION DRAWINGS FOR DETAILS.
2. FRP KICKER MUST MATCH MATERIAL USED FOR COLUMN.
3. D1 AND h1 MUST BE LOCATED SUCH THAT KICKER ANGLE HAS A MINIMUM 30 DEGREE ANGLE.
4. GUSSET PLATES MUST MATCH WALL THICKNESS OF COLUMN/KICKER GC/FABRICATOR SHOULD MAKE PLATES LARGE ENOUGH TO MEET EDGE DISTANCE RULES.
5. NUMBER AND SIZE OF RESIN BOLTS DETERMINED BY AXIAL KICKER FORCES NORMALLY.
6. USE GLUE ON ALL RESIN BOLT THREADS AND FENDER WASHER ON FRP SIDE OF STEEL BOLTED CONNECTIONS.
7. h4 HEIGHT VARIES / SITE.
8. FOR COLUMNS GREATER THAN 10FT IN HEIGHT, MORE BRACING MAY BE NEEDED.
9. h2 TYPICALLY BETWEEN .67 AND .75 COLUMN LENGTH.

THIS DRAWING IS THE EXCLUSIVE PROPERTY OF FIBERDESIGN LLC AND PROVIDED SOLELY FOR THE PURPOSE OF SPECIFYING AND DEPICTING FRP DESIGN DETAIL WITHIN ENGINEERING DRAWINGS AND PLANS. ANY OTHER USE OF THESE DRAWINGS ARE EXPRESSLY PROHIBITED. THIS ELECTRONIC FILE MAY NOT BE STORED OR DISTRIBUTED WITHOUT PERMISSION OF FIBERDESIGN LLC, STANDISH, ME.

FRP KICKER DETAILS

SHEET
L2



www.fibrdesign.com
info@fibrdesign.com

